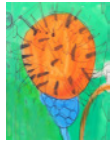


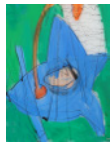
David Bridgeman's landscapes have symbols that mean a lot to him, both from his childhood home in Oxford, England and his new home, the Cayman Islands. He uses some of these symbols many times.

★ **FIND** how many times he has used the following images.



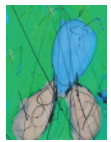
**Thistles**

The common name of a group of flowering plants characterised by leaves with sharp prickles on the edges.



**Bluebells**

Sweet-scented violet-blue flowers, now a protected species in the UK.



**Eucyclops Undra Morbis**

A water-borne version of a parasitic water bug David experimented with while studying science at university.



**The Wittenham Clumps**

A pair of wooded chalk hills – Castle Hill and Round Hill – in the district of Little Wittenham in Oxford, England.



**Didcot Power Station**

A combined coal and oil power plant (Didcot A Power Station) and a natural-gas power plant (Didcot B Power Station) in Oxford, England.



**Ironshore / "Cliff Rock"**

Outcrops of limestone – rock formed from fossilized coral that were part of the sea floor thousands of years ago.



**Gumbo Limbo Trees**

Locally called birch, the gumbo limbo – or the tourist tree – is easily recognised by its red peeling bark and thrives throughout the region.



**"King David"**

King David is a boy wearing a crown – a character that David created of himself as a shy child.

★ **FIND** your favourite part of any painting or drawing in the exhibition and complete a copy of it in the space below.

● **Follow Up Activity CONSIDER** what means a lot to you and doodle these symbols freely. Use brightly coloured crayons and paint to complete your drawings.