

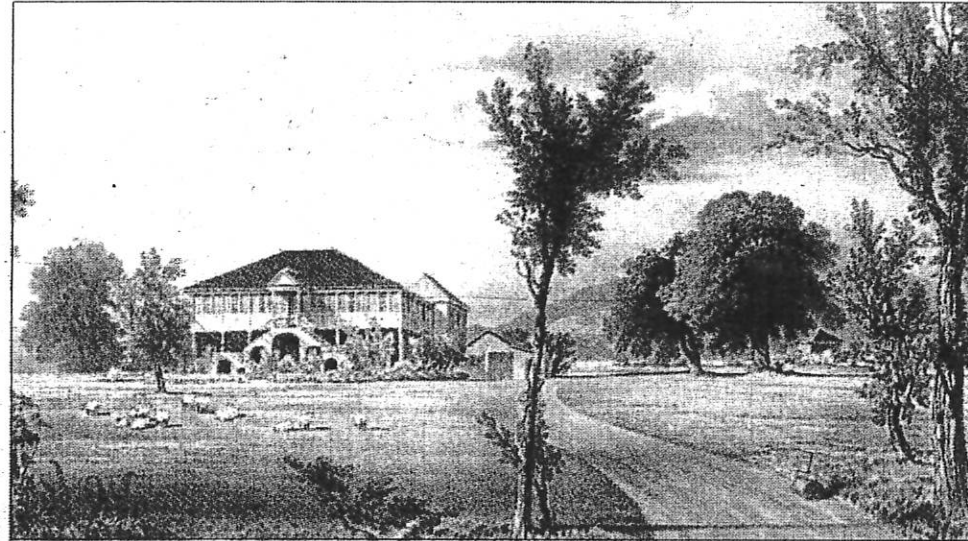
Historic exhibition comes to the National Gallery

This summer the National Gallery of the Cayman Islands is collaborating with local art collectors Hugh and Pam Hart to bring their collection of 19th-century Jamaican landscape prints into the public eye.

Paradise (re)Visited features over 40 lithographs by renowned watercolourist Joseph Bartholomew Kidd, with supporting works by artists Adolphe Dupery, Louis Belanger, James Robertson, Captain Whitty, P. Cartwright and James Hakewill; all well-known landscape painters based in Jamaica during the 1800s.

Their chosen subject matter is varied, ranging from architecture and landscapes to commerce and social scenes, providing viewers with a comprehensive view of the Jamaican environment in the last days of the pre-emanipation era.

Connections may also be drawn with the Caymanian history given the close con-



JB Kidd Residence near Kingston, Plate 46. - PHOTO: SUBMITTED

nection between the countries during this period.

"This collection illustrates the work of itinerant artists, predominantly British, who travelled to this Jamaica to seek out new and exotic landscapes," said Natalie Coleman, director of the National Gallery, who curated the exhibit. "It was their vision of Paradise that was reproduced throughout Europe pro-

viding the earliest 'popular' understanding of the Caribbean region in the West and prefiguring the later trend for romantic landscapes in the 19th century.

"Aside from the sheer beauty of this visual essay the work provides a poignant insight into life at this time. It will be of interest for visitors of all ages."

The extensive compi-

lation of works has been graciously loaned to the National Gallery from the personal collection of Mr. and Mrs. Hart.

The public is invited to view this historic exhibition at the National Gallery from Friday, 7 August until 7 October, 2009.

Opening hours for the Gallery are Monday to Friday 9 am to 5pm and Saturdays 11am to 4pm.