

'Portrait' curator Natalie Coleman and artist Wray Banker

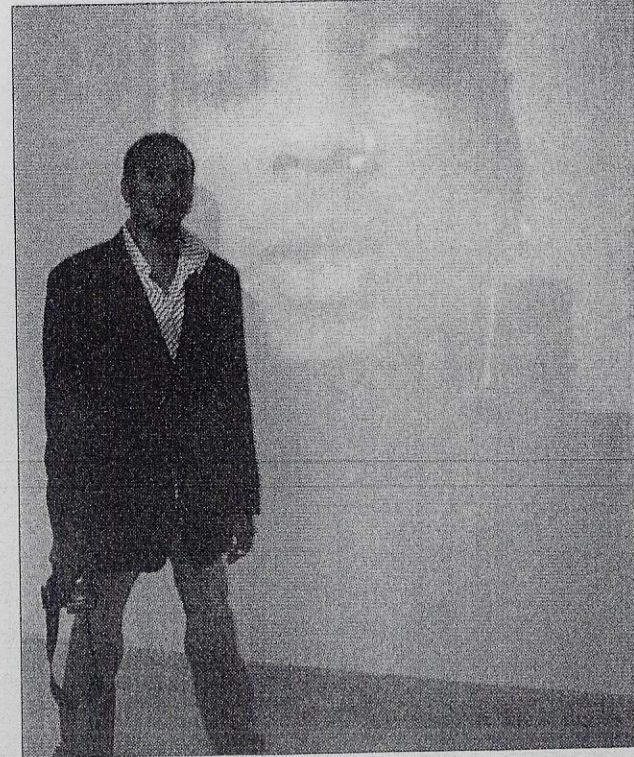
A look inward

By Searlina Bodden

The National Gallery recently hosted "Portrait of an Artist", an exhibition of works that showed the more introspective side of local artists. The opening was a unique occasion for both artist and muse to be one in the same. The effect was dizzying. Visitors, artists and gallery staff mingled amongst the pieces.

The event was obviously a chance for everyone to discover themselves – one quirky realisation at a time. To the alternative funk beats of local DJ Alexi, guests and visitors explored the works freely and as the night went on it was hard to tell artist from art enthusiast, such was the vibe of naked creativity.

Visit the exhibition from now until 5 September at the National Gallery. *Photos: Searlina Bodden and Wray Banker*



Artist Aston Ebanks

